

# Unity 28 (right hand drain)

Product code : **UN28R**

Draft revision : **20130111083333**

External dimensions : **60" x 28" x 21,5" [152,4 cm x 71,1 cm x 54,6 cm]**

Series : **Special**

Seats : **1**

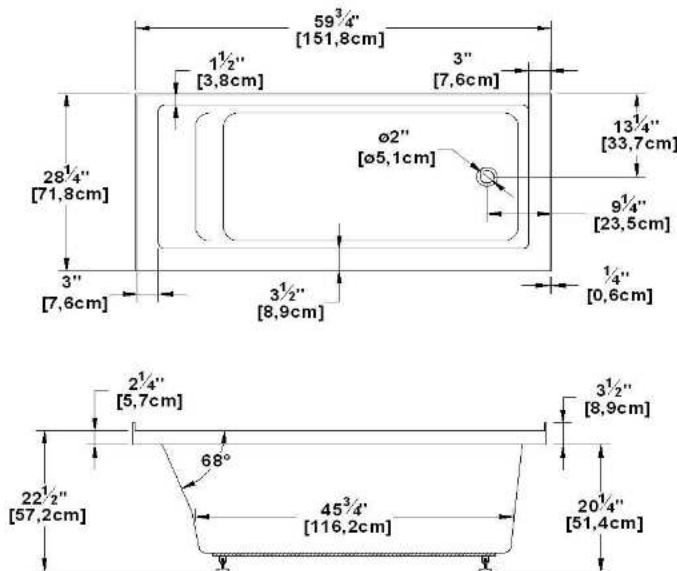
2012 catalog page : **31**

Low-profile support : **yes**

Arm rests : **no**

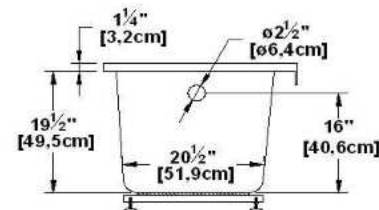
Low-profile available : **no**

## Draft and specs

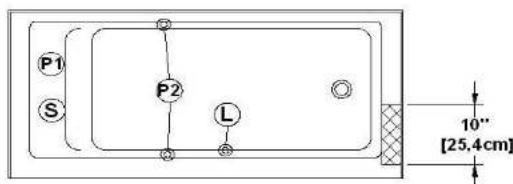


Specifications	
Capacity :	47 IMP Gal. / 61,3 US Gal. / 213,7 liters
AeroMassage™ :	34 Easy Clean™ air jets
Super AeroMassage™ :	AeroMassage™ + 12 Easy Clean™ air jets
Dynamic Turbo™ :	4 Confort Pulse jets / 4 Confort Swirl jets
Comfort Air™ :	34 Easy Clean™ air jets
Characteristics :	n/a

Remarks	
*all measures have a precision of ± 1/4" (0,63cm)	
*internal dimensions taken at 4" (10cm) from bath bottom	
*capacity is measured by filling the soaker to 1-1/2" under the overflow	
*textured skirt available on all Freestanding products	
*shelf height is 3/4" on all "low-profile" models	



## Options and installation



accessories and decorative lines positions are approximative

Additional(s) note(s) :

Integrated acrylic tile flanges. If system, delivered with keypad not installed.

Legend	
(S) Blower	(L) Chromatherapy light
(P1) Pump	(P2) Grab bar
(C) Keypad	[X] Recommended faucets drilling location*
- - - - - Deck cut-out line	

Available models	
Model	Availability
Soaker alone	✓
Comfort Air™	✓
AeroMassage™	✓
Super AeroMassage™	✓
Dynamic Turbo™ (not available in the U.S.)	✓
Dynamic Turbo™ + AeroMassage™	✓
Dynamic Turbo™ + Super AeroMassage™	✓

Available recommended options	
Front skirt :	SP60
Recommended drain :	WOCO14 (chrome finish)
tile flanges :	integrated
Floating controller :	available

\*It is possible that faucets may be installed elsewhere on the product. Verify, directly on the product, that there are no conflicting parts before drilling.

IMPORTANT NOTE : Specifications, dimensions and models are subject to change.

Visit our website <http://www.oceania-attitude.com> to access up-to-date dimensions and informations. In all cases, information on the website is the most up-to-date. Dimensions may vary slightly. To ensure proper fit, mesurements must be taken on the product directly.

### Head office

591, avenue des Entreprises  
 Thetford Mines, Quebec  
 CANADA G6H 4B2

### Phone numbers

No-charge : 1-877-332-4224  
 Fax : 1-866-460-4334

### Internet

Web : <http://www.oceania-attitude.com>  
 Email : [info@oceaniabaths.com](mailto:info@oceaniabaths.com)